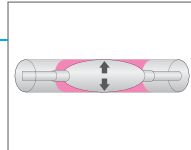


R&D of medical equipment

Catheters for treatment

Contact pressure

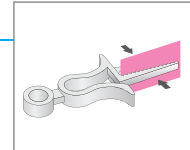
Contact pressure measurement between the blood vessel and inflated catheter balloon, to check their contact condition



Surgical clips

Contact pressure

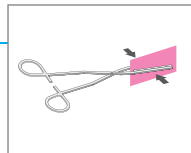
Pressure distribution measurement between the blood vessel and ligating clip, to check its contact condition



Surgical clamp forceps

Contact pressure

Contact pressure measurement between a blood vessel and the clamp forceps grasping/compressing it



Pressure measurement for body part surfaces

Contact pressure

Pressure measurement for a body part surface and check of its contact condition



Fuji Digital Analysis System
for Prescale

FPD-8010E

Scanner

PC
Analysis
software

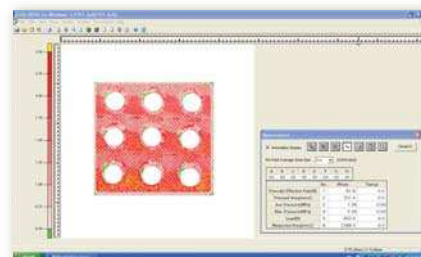
Colorized Prescale is digitized using a scanner and converted into numerical data by software. Various pressure analyses can be conducted.

The FPD-8010E converts Prescale pressure values into numerical data. It is a pressure mapping analysis system that allows various methods of analysis. In order to make Prescale data even more useful, we will meet your requirements for converting it to numerical data, saving data and performing data analysis.



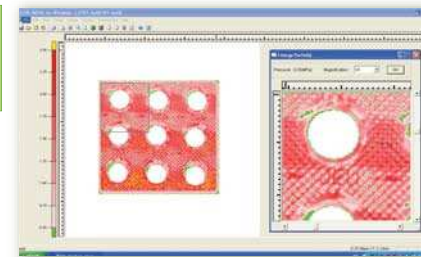
Functions

Overall Measurement



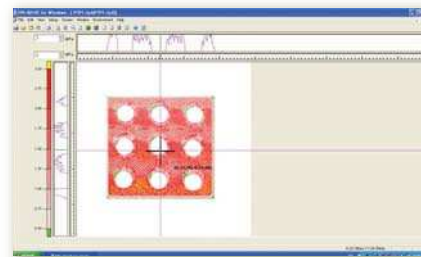
Various data such as average pressure and maximum pressure are displayed.

Partial Enlargement



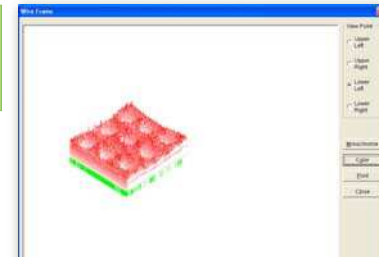
The specified field is enlarged. (4×,8×,16×) Pin point pressure values can be displayed on the image.

Pressure Cross Section



Pressure distribution on a line passing through a specified point is shown on a line graph.

Wire Frame



Pressure is displayed in 3-D format.

<http://www.fujifilm.com/products/prescale/guide/index.html>

*Note that the specifications and performance data described in this catalog are subject to change without notice for the purpose of improvement. Since the images provided are used for illustration purposes, they may differ slightly from actual products.

FUJIFILM
FUJIFILM Corporation

<http://www.fujifilm.com/products/prescale/>
Ref. No. IB-1106E (12-01-F1079-F1079) Printed in Japan ©2011 FUJIFILM Corporation

FUJIFILM

Pressure Measurement Film

PRESCALE

Applications in the food and pharmaceutical industries

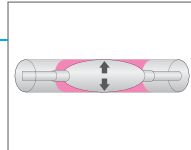


R&D of medical equipment

Catheters for treatment

Contact pressure

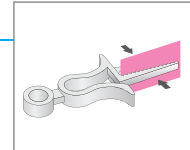
Contact pressure measurement between the blood vessel and inflated catheter balloon, to check their contact condition



Surgical clips

Contact pressure

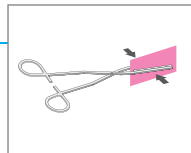
Pressure distribution measurement between the blood vessel and ligating clip, to check its contact condition



Surgical clamp forceps

Contact pressure

Contact pressure measurement between a blood vessel and the clamp forceps grasping/compressing it



Pressure measurement for body part surfaces

Contact pressure

Pressure measurement for a body part surface and check of its contact condition



Fuji Digital Analysis System
for Prescale

FPD-8010E

Scanner

PC
Analysis
software

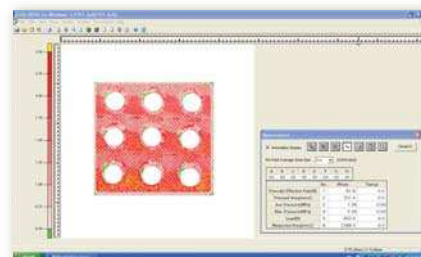
Colorized Prescale is digitized using a scanner and converted into numerical data by software. Various pressure analyses can be conducted.

The FPD-8010E converts Prescale pressure values into numerical data. It is a pressure mapping analysis system that allows various methods of analysis. In order to make Prescale data even more useful, we will meet your requirements for converting it to numerical data, saving data and performing data analysis.



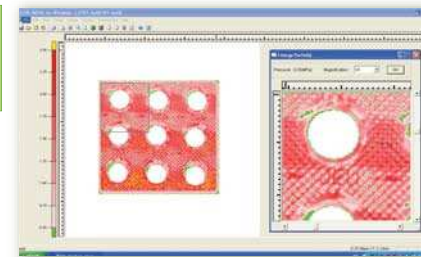
Functions

Overall Measurement



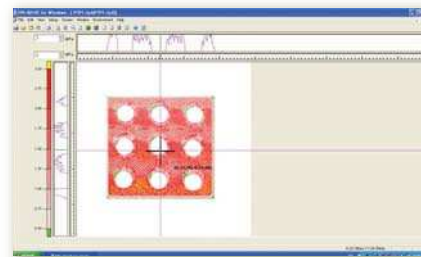
Various data such as average pressure and maximum pressure are displayed.

Partial Enlargement



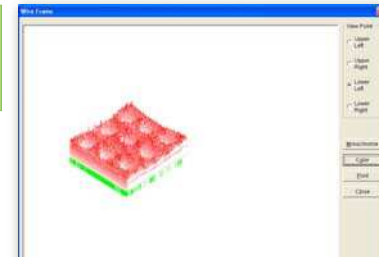
The specified field is enlarged. (4×, 8×, 16×) Pin point pressure values can be displayed on the image.

Pressure Cross Section



Pressure distribution on a line passing through a specified point is shown on a line graph.

Wire Frame



Pressure is displayed in 3-D format.

<http://www.fujifilm.com/products/prescale/guide/index.html>

*Note that the specifications and performance data described in this catalog are subject to change without notice for the purpose of improvement. Since the images provided are used for illustration purposes, they may differ slightly from actual products.

FUJIFILM
FUJIFILM Corporation

<http://www.fujifilm.com/products/prescale/>
Ref. No. IB-1106E (12-01-F1079-F1079) Printed in Japan ©2011 FUJIFILM Corporation

FUJIFILM

Pressure Measurement Film

PRESCALE

Applications in the food and pharmaceutical industries

